



GAT MONTHLY MEMBERSHIP PROGRESS REPORT

Results as of: 3/31/2022

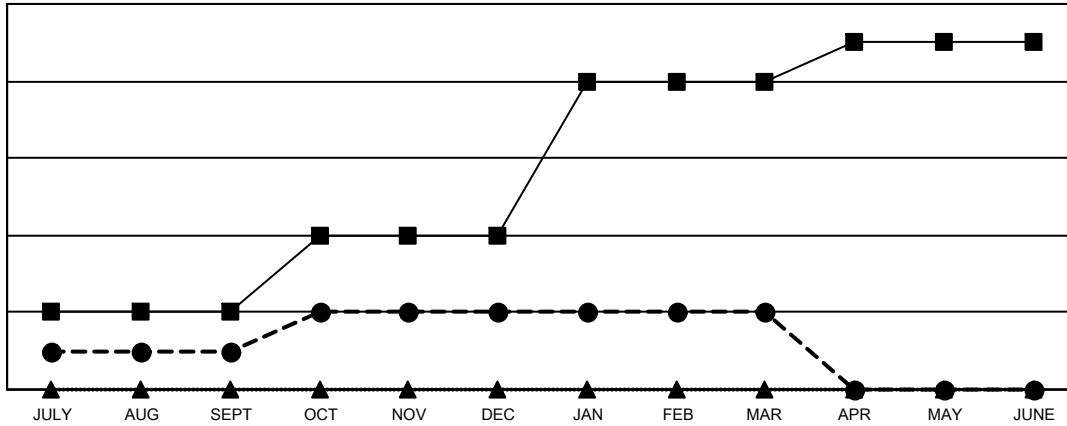
Multiple District 9

LOCATION: IOWA

Clubs			
RESULTS FOR 2021-2022			
QUARTER	NEW CLUB GOAL	NEW CLUBS	DROPPED CLUBS
JULY/AUG/SEPT	2	1	7
OCT/NOV/DEC	2	1	3
JAN/FEB/MAR	4	0	5
APR/MAY/JUNE	1	0	0

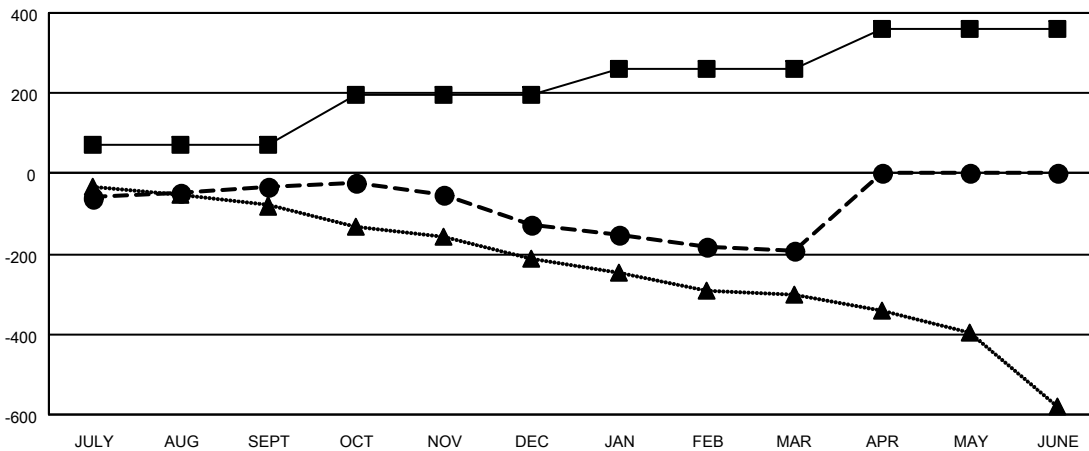
Members			
RESULTS FOR 2021-2022			
QUARTER	MEMBER GROWTH NET GOAL	MEMBER GROWTH ACTUAL	DROPPED MEMBERS ACTUAL (including transfers)
JULY/AUG/SEPT	70	185	205
OCT/NOV/DEC	125	161	227
JAN/FEB/MAR	65	114	169
APR/MAY/JUNE	100	0	0

GOALS AND ACTUAL NEW CLUBS CUMULATIVE



- CURRENT YEAR GOALS FOR NEW CLUBS
- CURRENT YEAR ACTUAL NEW CLUBS
- ▲- LAST YEAR ACTUAL NEW CLUBS

GOALS AND ACTUAL MEMBERS CUMULATIVE



- MEMBER GROWTH NET GOAL
- MEMBER GROWTH ACTUAL
- ▲- LAST YEAR MEMBERSHIP ACTUAL

DROPPED CLUBS: 15	
DROPPED MEMBERS	
DECEASED	108
CLUB CANCELLED	41
OTHER	452
TOTAL	601

150 CLUBS OF 303 ADDED 1 OR MORE NEW MEMBERS

[CLICK HERE FOR CUMULATIVE MEMBERSHIP DATA](#)

GENDER DISTRIBUTION	
MALE	5,045 (72.38%)
FEMALE	1,924 (27.60%)
NON BINARY	1 (0.01%)
PREFER NOT TO ANSWER	0 (0.00%)
TOTAL FAMILY UNIT MEMBERS	1,463
FAMILY MEMBERS PAYING HALF DUES	744